

Planet Horizons
Technologies

Physical Water Treatment

Aqua-4D[®] System

Buildings & Homes



Permanent prevention of limescale
deposits and corrosion

Removal of existing limescale deposits

Long term protection of investment

Energy savings



Limescale and corrosion in water conduits : a recurrent problem

Water conduits in houses are often blocked or partially clogged mainly because of scale. These scaling problems are mostly important in hot water and boiler circuits. They cause a diminution of water flow and heating systems malfunctioning with an increase of energy consumption. Equipments are worn out rapidly and the excessive usage of cleaning agents and other chemical products in order to counter the problem create pollution in potable water.

Furthermore, when water is soft (poorly charged with lime), it is often corrosive for metal water conduits. In both cases, the damages may cause high repair costs (leakages and clogging).



Cost and maintenance problems with limescale in heating circuits



Water softener : the bygone classical solution

Presently, many governments, local and national, are reducing the usage of water softeners (ion exchangers) by law and decree.

Ion exchangers use more water than the actual water treated and reject salt into the ground water after consumption, thus creating environmental problems and health issues.



Continuous consumption of NaCl is expensive and tedious

Aqua-4D® : The ecological solution for the future

Eliminates present limescale in water conduits between 6 to 24 months

Prevents limescale deposits by maintaining the limestone in suspension in the water

Inhibits corrosion caused by an aggressive water by creating a protective film inside the conduits

Does not modify the chemical composition of the water

Advantages

- Sustainable protection of the water conduits, boilers and household appliances
- No maintenance
- Respects the environment

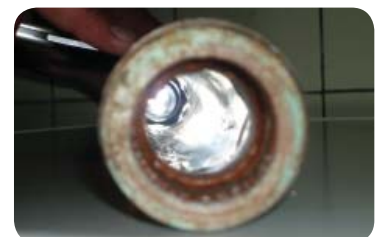
Savings

- Chemical products
- Energy consumed for hot water
- Cleaning products

Return of investment between 1 and 5 years



Control tube in the hot water system with heavy deposits before installing Aqua-4D®



Control tube in the hot water system with heavy deposits after 5 months installing Aqua-4D®